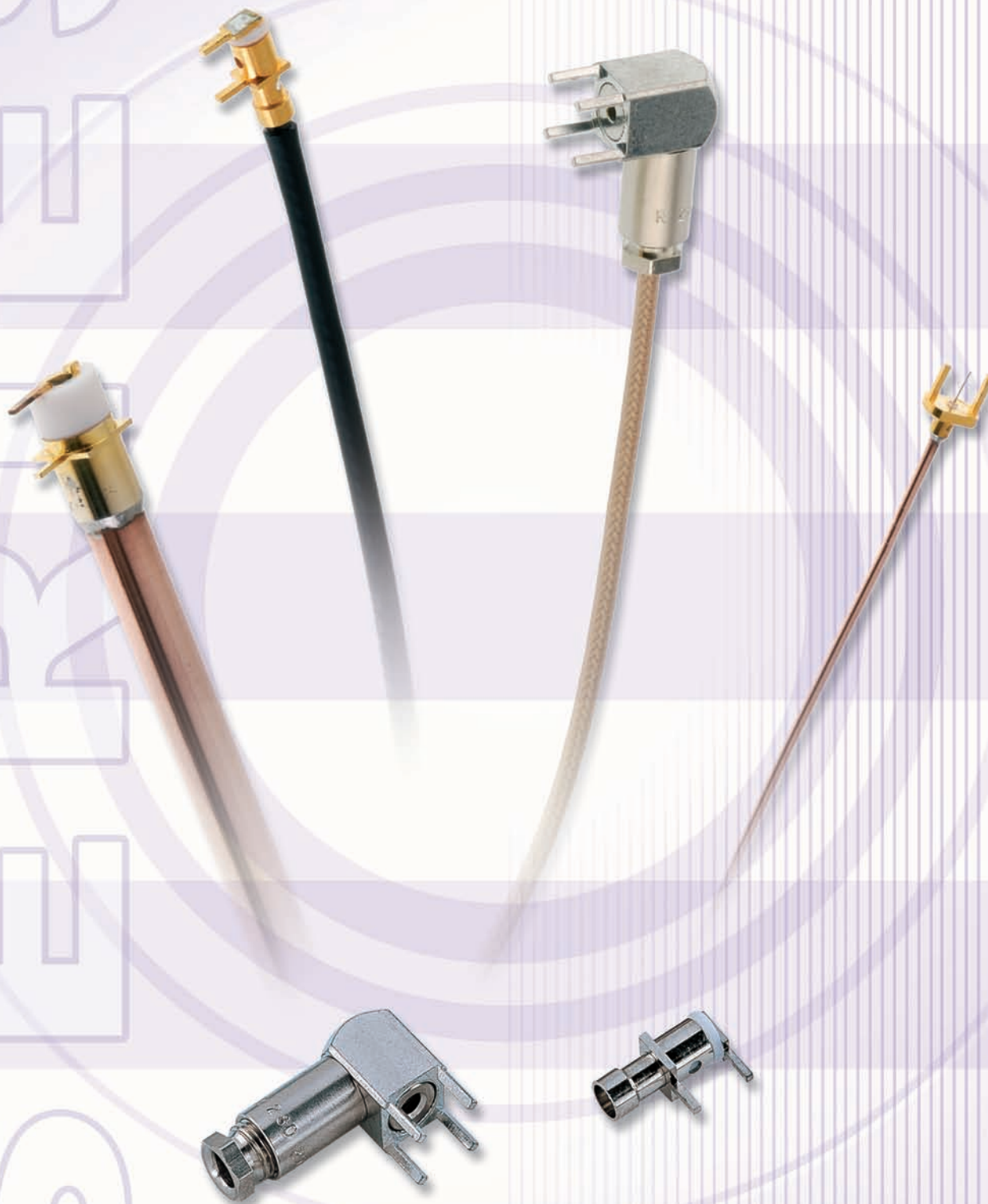


# PCB Terminal

## R280





	PAGE
Straight PCB cable terminals.....	4
Right angle PCB cable terminals.....	5
45° angle PCB cable terminals .....	5
Panel drilling .....	6
Assembly instructions .....	7-10

# PCB cable terminals

## STRAIGHT PCB CABLE TERMINALS

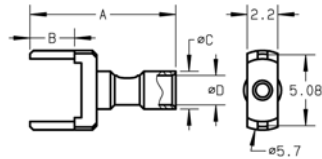
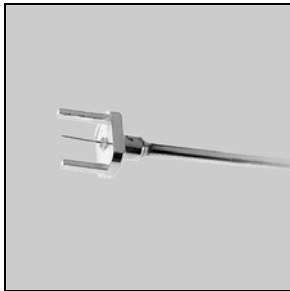


Fig. 1

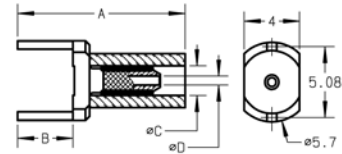


Fig. 2

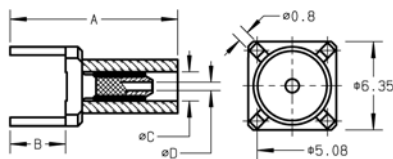


Fig. 3

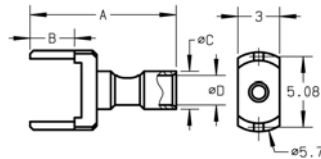


Fig. 4

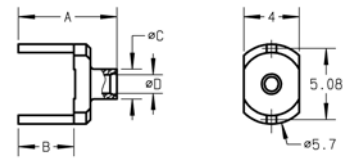


Fig. 5

Cable group	Part number	Fig.	Imp. (Ω)	Dimensions (mm)				Assembly instructions	Panel drilling	Finish	Note
				A	B	C	D				
2/50/S	R280 221 000*	1	50	10.50	3.20	2.70	1.45	M04	P02	Gold	2 pins / solder
	R280 280 000	2		12.10	4.00	2.55	1.10	M01		Tin	2 pins / crimp
	R280 280 020			3					16.20	1.00	Nickel
	R280 282 000	12.10			3.25	1.65	P02	Gold	2 pins / crimp		
2.6/50+75/D	R280 280 200*	2		8.40	3.20	3.15		2.30	M04	Tin lead	2 pins / crimp
2.6/50+75/S	R280 280 220*						3			12.10	4.00
	R280 280 100	Tin lead		2 pins / crimp							
	R280 280 120	3		17.20	3.25	1.70	P01	Nickel	4 pins / crimp		
	R280 284 000							2	1.3	M02	P02
.047"	R280 287 100	5		7.1	3	2.25					
.085"	R280 287 200										

• Upon request

# PCB cable terminals

## RIGHT ANGLE PCB CABLE TERMINALS

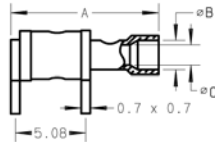


Fig. 1

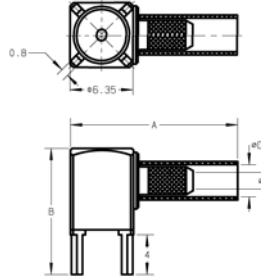


Fig. 2

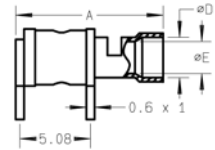
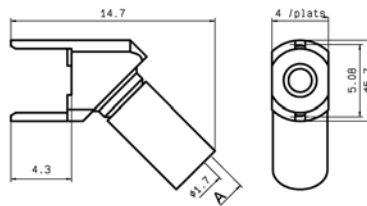
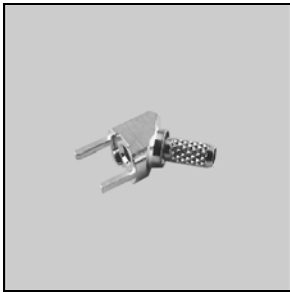


Fig. 3

Cable group	Part number	Fig.	Imp. (Ω)	Dimensions (mm)			Assembly instructions	Panel drilling	Finish	Note
				A	B	C				
2/50/S	<b>R280 219 000</b>	1	50	10.70	2.10	1.45	M03	P03	Gold	2 pins / solder
2.6/50/D	<b>R280 220 200*</b>				2.90	2.40		P04		
2.6/50+75/S	<b>R280 220 008</b>	3			2.30	M01		P01	Tin lead	
	<b>R280 294 000</b>	2		16.85	3.25		1.70			4 pins / crimp

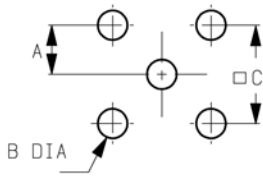
## 45° ANGLE PCB CABLE TERMINALS



Cable group	Part number	Imp. (Ω)	Dimensions (mm) A	Assembly instructions	Panel drilling	Finish
2.6/50/S	<b>R280 296 000</b>	50	2.95	M01	P03	Tin lead
2.6/50/D	<b>R280 296 120</b>		3.25			

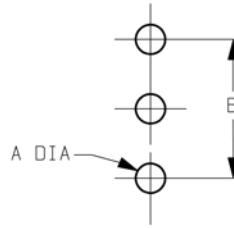
• Upon request

### P01



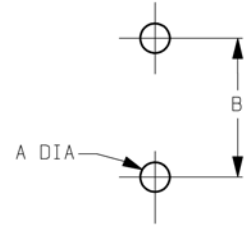
	MM		INCH	
	maxi	mini	maxi	mini
A	2.56	2.52	0.101	0.099
B	1.4	1.3	0.055	0.051
C	5.13	5.03	0.202	0.198

### P02



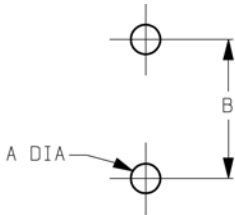
	MM		INCH	
	maxi	mini	maxi	mini
A	1.15	1.05	0.045	0.041
B	5.15	5.05	0.203	0.199

### P03



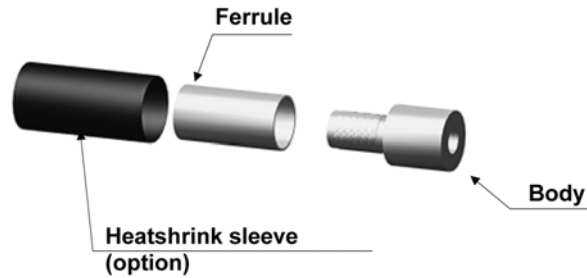
	MM		INCH	
	maxi	mini	maxi	mini
A	1.10	1.00	0.043	0.039
B	5.13	5.03	0.202	0.198

### P04

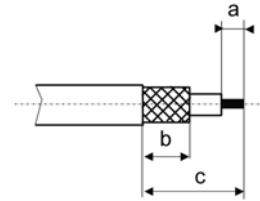


	MM		INCH	
	maxi	mini	maxi	mini
A	1.5	1.4	.059	.055
B	5.13	5.03	.202	.198

### M 01

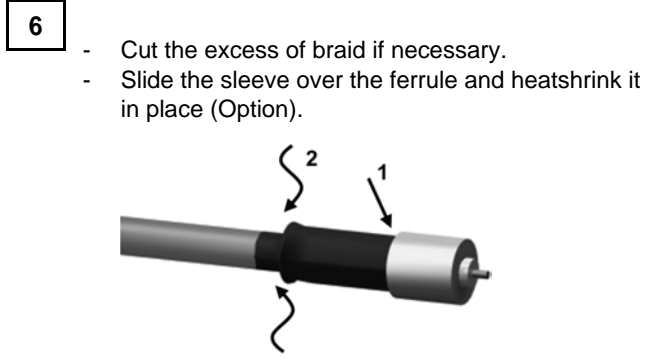
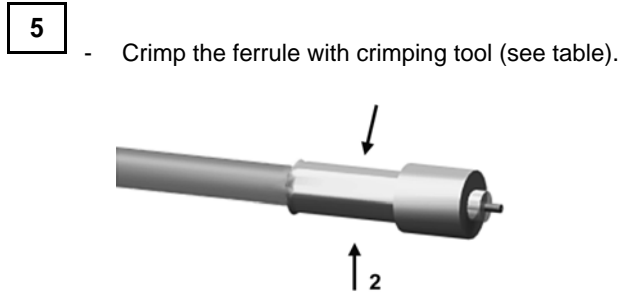
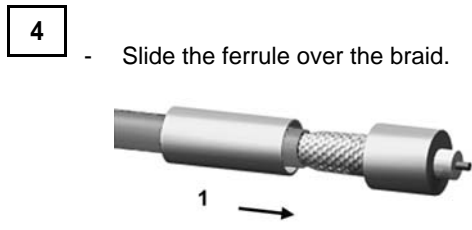
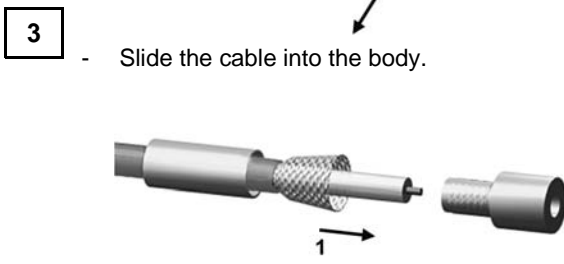
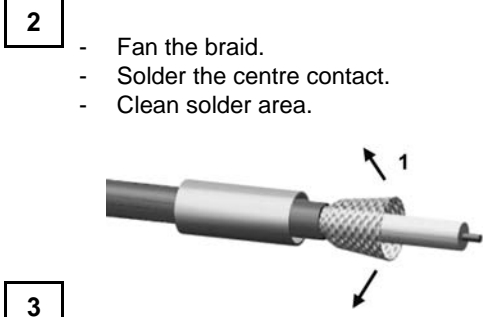
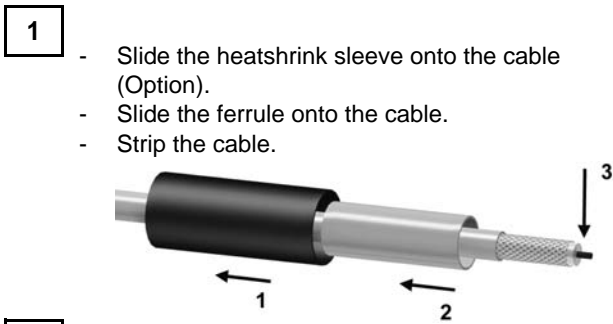


STRIPPING DIMENSIONS



Part Number	Stripping length (mm)			Hex	Crimping tool
	a	b	c		
R280 280 000 R280 280 020 R280 280 120	4	5	10	3.25	R282 211 000 or R282 293 000 + dies R282 235 003 (M22520/5-03)
R280 280 100		5.9	11.2		
R280 282 000		7	12	2.67	
R280 284 000	*	6	*	3.25	
R280 294 000	3.5		17.5		
R280 296 000 R280 296 120	4	5.5	14.5		

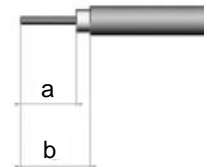
\* : dimension specified by user or be optional



### M 02



STRIPPING DIMENSIONS



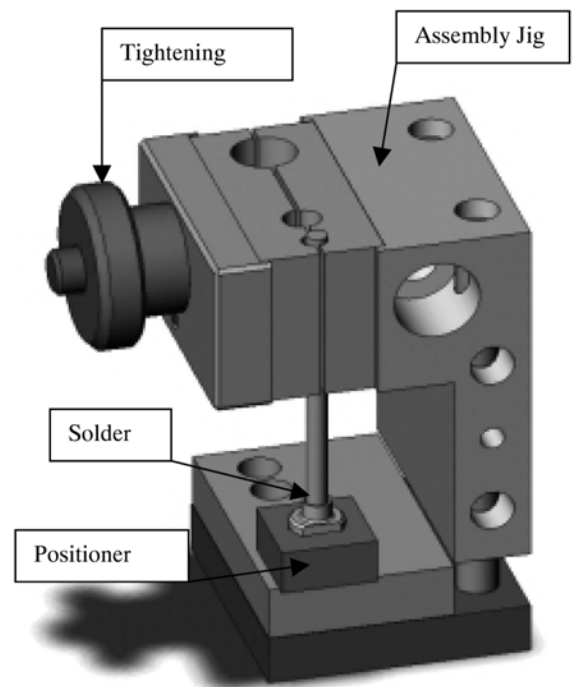
We recommend a thermal preconditioning cable

Part Number	Stripping length (mm)		Assembly jig	Positioner
	a	b		
R280 287 100 R280 287 200	4	5	R282 740 020	R282 863 000

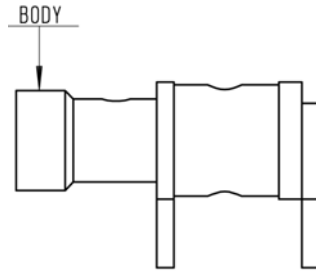
**1** - Cable stripping.

**3** - Solder on the cable.  
 - Let the assembly cool down before removing it from the jig.  
 - Clean solder.

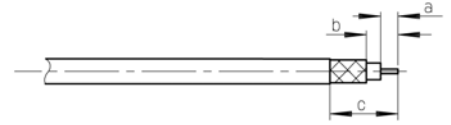
**2** - Introduce the cable into the connector body until.  
 - Contact with the body shoulder.  
 - Place the sub assembly into the assembly jig R282 740 020 (or equivalent) with positioner R282 863 000 and tighten it.



### M 03



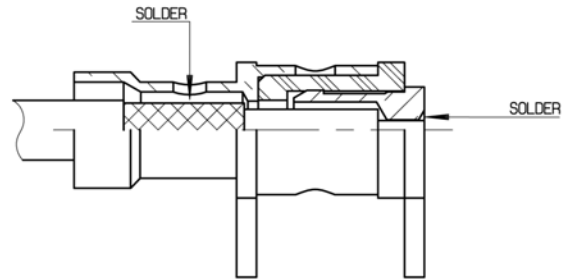
STRIPPING DIMENSIONS



Part number	Stripping length (mm)		
	a	b	c
R280 219 200	1.6	5.1	8.6
R280 220 008	3	6.5	9.5
R280 220 200	1.6	5.1	8.6

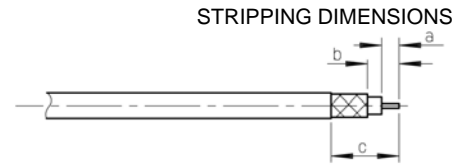
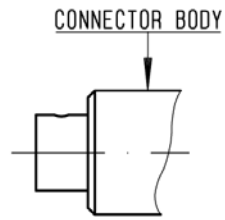
**1** - Strip the cable.

**2** - Introduce cable into the connector body until contact with it.  
 - Solder braid.  
 - Solder cable core.





# M 04



Part number	Stripping length (mm)		
	a	b	c
R280 221 000	4	6.5	10.5
R280 222 000		6	8.5

**1** - Strip the cable.

**2** - Introduce cable into the connector body until contact with it.  
 - According to F direction.  
 Solder the braid on the body.

